



# OF XANADU RESORT ISLAND www.xanadu.com



## XANADU RESORT HOTEL 2017 SUMMER ZAREHIB GOLF & SPA WATERVIEW ROOMS

<b>XANADU RESORT HOTEL</b>		<b>Category</b>	<b>Field</b>	<b>Concept</b>	<b>Opening Date / Renovation</b>
		3 Star	150,000 m <sup>2</sup>	High Class 31 Incubator	2002 / 2015 & 2018 (partial)
<b>Tel</b>	90 242 70 00 20	<b>Address</b>	Kula, Nusa Tenggara Barat, 48152, ID	<b>Insurance System</b>	
<b>Fax</b>	90 242 711 17 31	<b>Location</b>	Beach 5 km	Airport 40 km	<b>Labels / Label / Seminar / Business / Orientation / etc</b>
<b>Reservation Contact:</b>	<a href="mailto:reservations@xanadu.com">reservations@xanadu.com</a>	<b>Transfer</b>	Beach 6 km	Number 50 Km	
<b>Sales Office Email:</b>	<a href="mailto:salesoffice@xanadu.com">salesoffice@xanadu.com</a>		<b>Fac</b>	<b>Fac</b>	<b>Credit Cards</b>
<b>Web:</b>	<a href="http://www.xanadu.com">www.xanadu.com</a>				<b>VISA / MasterCard</b>

### CERTIFICATES

ISO 14001:2004 Environmental Management System / ISO 9001:2015 Quality Management System / ISO 27001:2013 Information Security / Green Star / Trip Star

### ROOM INFORMATION

Total Room Number: 421 Rooms Total Bed Number: 392 Beds (New beds, chairs, floor coverings (hard rooms with carpet, bungalow rooms with parquet), pillows, linen in all rooms. New marble of furniture in main building. New balcony parapets and curtains in bungalow - additional amenities in all bedrooms)

ROOM TYPE	STANDARD HOTEL ROOM (Garden view)	STANDARD HOTEL ROOM (Sea View)	MAIN BUILDING JUNIOR SUITE (Garden View)	MAIN BUILDING JUNIOR SUITE (Sea View)	MAIN BUILDING FAMILY ROOM (1 Bathroom)	BUNGALOW STANDARD ROOM (Garden View)	BUNGALOW FAMILY ROOM (1 Bathroom)	BUNGALOW FAMILY ROOM (2 Bathroom)	BUNGALOW JUNIOR SUITE	BUNGALOW FAMILY SUITE	GOLF SUITE	PRESIDENTIAL SUITE (Complahu, Marco Polo / Apulakhan)	PRESIDENTIAL VILLA	HANDICAPPED ROOM
Number of Rooms	38	50	11	11	4	60	20	15	7	1		5	5	6
Room Area (sq meter)	26 m <sup>2</sup>	26 m <sup>2</sup>	43 m <sup>2</sup>	43 m <sup>2</sup>	45 m <sup>2</sup>	26 m <sup>2</sup>	45 m <sup>2</sup>	52 m <sup>2</sup>	41 m <sup>2</sup>	41 m <sup>2</sup>	60 m <sup>2</sup>	140 m <sup>2</sup>	150 m <sup>2</sup>	25 m <sup>2</sup>
Number of Beds	2+1/2	2+1/2	2+1/2	2+1/2	2+1/2	2+1/2	2	2	2+1/2	2+1/2	2+2	5	5	2+1/2
Sea View		✓		✓								✓		✓
Garden View	✓		✓		✓	✓	✓	✓	✓	✓	✓		✓	✓
Bathroom	1	1	1	1	1	1	1	1	1	1	2	2/5	3	1
Frang. Bed			1	1					1	1		1		
Viewing Deck			✓	✓	✓		✓	✓	✓	✓	✓	✓	✓	
Shower/WC														
Built in TV	✓	✓	✓	✓	✓	✓	✓	✓	✓	✓	✓	✓	✓	✓
Bygone	✓	✓	✓	✓	✓	✓	✓	✓	✓	✓				✓
Tennis												✓	✓	✓
Parquet floor							✓	✓	✓	✓			✓	
Carpet Floor	✓	✓	✓	✓	✓									✓
Direct Phone Line	✓	✓	✓	✓	✓	✓	✓	✓	✓	✓	✓	✓	✓	✓
LED TV	✓	✓	✓	✓	✓	✓	✓	✓	✓	✓	✓	✓	✓	✓
Safe (In Room)	✓	✓	✓	✓	✓	✓	✓	✓	✓	✓	✓	✓	✓	✓
Music Broadcast	✓	✓	✓	✓	✓	✓	✓	✓	✓	✓	✓	✓	✓	✓
Wardrobe (In Room)	✓	✓	✓	✓	✓	✓	✓	✓	✓	✓	✓	✓	✓	✓
Bathtub	✓	✓	✓	✓	✓	✓	✓	✓	✓	✓	✓	✓	✓	✓
Mini bar	✓	✓	✓	✓	✓	✓	✓	✓	✓	✓	✓	✓	✓	✓
Safe (Extra)	✓	✓	✓	✓	✓	✓	✓	✓	✓	✓	✓	✓	✓	✓
Carpet in Corridor	✓	✓	✓	✓	✓	✓	✓	✓	✓	✓	✓	✓	✓	✓
Sea View	✓	✓	✓	✓	✓	✓	✓	✓	✓	✓	✓	✓	✓	✓
Tea/Coffee Table	✓	✓	✓	✓	✓	✓	✓	✓	✓	✓	✓	✓	✓	✓
Bathrobe	✓	✓	✓	✓	✓	✓	✓	✓	✓	✓	✓	✓	✓	✓
Slippers	✓	✓	✓	✓	✓	✓	✓	✓	✓	✓	✓	✓	✓	✓
Travel Bag	✓	✓	✓	✓	✓	✓	✓	✓	✓	✓	✓	✓	✓	✓
Mini Bar	✓	✓	✓	✓	✓	✓	✓	✓	✓	✓	✓	✓	✓	✓
Cafe														
High Chair	✓	✓	✓	✓	✓	✓	✓	✓	✓	✓	✓	✓	✓	✓
Private Bath														✓
Private Garden														✓
Extra														
Fishes														✓
Equip.														✓





# CANADIAN HOLIDAY RESORT



## 2020 SUMMER 24 HOUR HIGH CLASS ALL INCLUSIVE CONCEPT

**HIGH CLASS ALL INCLUSIVE CONCEPT** 24 hours Local Alcoholic and Non-Alcoholic Beverages and some Imported Beverages - Alcoholic and Non-Alcoholic Cocktails - All Beverages include Tuxedo Coffee. Food is available 24 hours

### RESTAURANTS

BREAKFAST	HOURS	LOCATION	CONCEPT DETAIL
Jack Ruby Restaurant	07:00-10:00	Main Building	Open B. Brk Breakfast with new fun serving line, Hot Buffet, Kids Buffet, Kids eating 50% off, Free Omelette Bar. *Specialty hot and cold breakfast & snack
	10:30-11:00	Main Building	Hot breakfast
LUNCH	HOURS	LOCATION	CONCEPT DETAIL
Jack Ruby Restaurant	12:30-15:00	Main Building	Open B. Brk Lunch with new fun serving line, Hot Buffet, Kids Buffet, Kids eating 50% off, Alcoholic and Non-Alcoholic Beverages as included in the Concept Lunch Buffet, Kids buffet, Hot Buffet, 50% off Free Meal (not required) *Omelette Bar
Fancy Steak New Buffet lounge	12:30-14:00	PARADE	Hot Buffet Lunch from 12:30 to 14:00 - Kids eating 50% off 12:30-14:00
Secret Garden Bar & Bar	12:30-15:00	Secret Garden	Specialty lunch available to be used for complimentary between the hours 12:30-15:00
DINNER	HOURS	LOCATION	CONCEPT DETAIL
Jack Ruby Restaurant	17:00-22:00	Main Building	Open B. Brk Dinner with new fun serving line, Terrace with new lighting and 20% off adults & dinner lounge Alcoholic and Non-Alcoholic Beverages as included in the Concept Hot Buffet, Kids Buffet, 50% off Free Meal (not required) *Omelette Bar - Allent of the night is complimentary weekly specials
SNACK SERVICE	HOURS	LOCATION	CONCEPT DETAIL
Fancy Steak	12:00-17:00	Antique Pool Area	Snack specialty hot buffet & salad buffet from 12:00 to 17:00 *Snacks, fruit & beverage offer 12:00-17:00
Beach Shack New buffet lounge	12:00-16:00	Beach	Snack Service near the Ball & Jockey of the day from 12:00 to 16:00
Fancy Steak lounge	12:00-18:00	Main Building	Hot Alcoholic, Drinks, Desserts, & Specialty items from 12:00 to 18:00, new ice cream truck
Jack Ruby	14:00-18:00	Casino, Ballrooms	Lunch for service - reservation and dress code may be requested
Bar	12:30-14:30	Hot Executive	Hot specialty menu for work from 12:30 to 14:00
ICE CREAM SERVICE	HOURS	LOCATION	CONCEPT DETAIL
Beach Bar	10:00-18:00	Beach	Ice Cream and Fruit Service from 10:00 to 18:00
Fancy Steak	12:00-17:00	Antique Pool Area	Ice Cream from 12:00 to 17:00
Beach Bar	12:00-14:30	Main Building	Ice Cream
Fancy Steak lounge	12:00-18:00	Main Building	Specialty ice cream truck from 12:00 to 18:00
Secret Garden Bar & Bar	12:00-18:00	Secret Garden	Ice Cream from 12:00 to 18:00
NIGHT SNACK SERVICE	HOURS	LOCATION	CONCEPT DETAIL
Jack Ruby Restaurant	19:00-23:00	Main Building	Night snacks for drinks and beverage service 19:00-23:00

### A LA CARTE RESTAURANTS

A LA CARTE	HOURS	LOCATION	CONCEPT DETAIL	A LA CARTE	HOURS	LOCATION	CONCEPT DETAIL
Beach Shack	12:00-18:00	Main Building	Hot Casual Dining	Beach Shack	12:00-18:00	Beach	Beach Shack 12:00-18:00
Jack Ruby Family	12:30-15:00	Beach	Hot Casual Dining	Jack Ruby Family	12:30-15:00	Beach	Jack Ruby Family 12:30-15:00
La Cascade	12:00-15:00	Main Building	Hot Casual Dining	La Cascade	12:00-15:00	Beach	La Cascade 12:00-15:00
Mexican	12:00-22:00	Main Building	Mexican Cuisine	Mexican	12:00-22:00	Main Building	Mexican 12:00-22:00

\* All Dining & Bar Concepts require a minimum 15% tip, additional special services may be required. Reservation required for all a la carte restaurant.  
 \* All Dining & Bar Concepts require a minimum 15% tip, additional special services may be required. Reservation required for all a la carte restaurant.  
 \* All A La Carte Restaurants have a special reservation cost for families with children. At the other hand, A La Carte Restaurants require a minimum 12 years old to use.

### BARS

BARS	HOURS	LOCATION	CONCEPT DETAIL
Beach Bar	16:00-22:00	Beach	Alcoholic and Non-Alcoholic Beverages as included in the Concept
Beach Bar	10:00-18:00	Antique Pool Area	Alcoholic and Non-Alcoholic Beverages as included in the Concept from 10:00 to 18:00
Beach Bar - Antiquity	20:00-23:00	Fancy Bar Top Floor	Alcoholic and Non-Alcoholic Beverages as included in the Concept - Special cocktails menu and snacks from 20:00 to 23:00. *All beverages are a la carte
Beach Bar	18:00-23:00	Main Building	Alcoholic and Non-Alcoholic Beverages as included in the Concept (18:00-23:00)
Beach Bar	07:00-23:00	Beach Area	Alcoholic and Non-Alcoholic Beverages as included in the Concept
Beach Bar	10:00-23:00	Beach Terrace	Alcoholic and Non-Alcoholic Beverages as included in the Concept
Beach Bar	12:00-18:00	Beach	Alcoholic and Non-Alcoholic Beverages as included in the Concept from 12:00 to 18:00
Beach Bar	12:00-18:00	Beach	Hot Alcoholic, Non-Alcoholic Beverages from 12:00 to 18:00
Beach Bar	06:00-18:00	Beach	Alcoholic and Non-Alcoholic Beverages as included in the Concept from 06:00 to 18:00
Beach Bar	17:00-23:00	Beach	Alcoholic and Non-Alcoholic Beverages as included in the Concept from 17:00 to 23:00
Secret Garden Bar & Bar	12:00-18:00	Secret Garden	Alcoholic and Non-Alcoholic Beverages as included in the Concept from 12:00 to 18:00

### MINI BAR

2 Coca Cola, 2 Diet Coca Cola, 2 J & J Soda, 2 Units Fruit Juice (100%), 2 Units Beer, 2 Units Hot Tea, 2 Units Sparkling Water, 1 Unit Mineral Water (100%)  
 For the Family with Children (100%) - Check for V.I.P.  
 \*White and Beverages (100%) for Suite Areas, 7 Available, 7 Days and 7 Days (100%) for the first of arrival and up to 7 days use every day.





**CAMP XANADU**  
THE GREAT  
SUMMER ESCAPE  
2013-2014



**PAID SERVICES**

ACTIVITIES	HOURS	DESCRIPTION	ACTIVITIES	HOURS	DESCRIPTION	ACTIVITIES	HOURS	DESCRIPTION
Laughing	24 Hours		Telly Station	24 Hours		Rainy Day	24 Hours	by Dave, Kelly, etc.
Radio Station	24 Hours	Free recharge pad area	Star Wars Music		Recreation required	Jewellery Store	11:30-1:15	
Factory "Painting"	08:30-10:45	Children's displays	Private Theatre (even)		Discussion/Debate	Emotion Zone	10:30-12:00	
Flag Football	08:30-10:00	Children's table table	Flag Football	14:30-16:00		Optical Station	11:30-1:15	
Pool for parents	08:30-10:45	7:00-8:15	Warrior, Survival	10:00-12:00		Shooting Taps (even)	10:30-12:00	
4-6 year Reception	08:30-10:00		Photography	14:30-16:00		Fun Microscopy	4:00-5:30	
Order Books	10:30-12:00	07:00-08:30	1 Hour, 1 Hour, 1 Hour			Doctor's Office	11:00am	

\* Room Service for Bathing Suits and out of incidental suite / activities offered free of charge 24 hours.

\* Casino hours: 10:30-11:00 AM, 12:30-1:00 PM, 3:00-4:00 PM, 5:00-6:00 PM, 7:30-8:30 PM, 9:00-10:00 PM

\* Laundry provided on 12:00 will be delivered next day 11:30. Laundry Service in a duffel bag.

\* Free water provided for the day. Refreshments can be made in the Club House. Bookings for the Family Pool are available at 2:00pm on 25/04/14.

\* Payment to be made on the spot.

**APPROXIMATE PAID SERVICES AT DIVISION**

INDOOR AREA 1	INDOOR AREA 2	INDOOR AREA 3	OUTDOOR AREA 1	OUTDOOR AREA 2	OUTDOOR AREA 3	COMMON AREAS
Play Area (ages 4-8)	Play Area (ages 4-8)	Play Area (ages 4-8)	Play Area (ages 4-8)	Play Area (ages 4-8)	Play Area (ages 4-8)	Clubhouse (1500 m <sup>2</sup> )
Children's Play Room	Children's Play Room	Children's Play Room	Children's Play Room	Children's Play Room	Children's Play Room	Adventure Park (800 m <sup>2</sup> )
Ball Room (1000)	Ball Room (1000)	Ball Room (1000)	Ball Room (1000)	Ball Room (1000)	Ball Room (1000)	Swim Area and Kitchen (100 m <sup>2</sup> )
Kitchen	Kitchen	Kitchen	Kitchen	Kitchen	Kitchen	Changing Room
Sleeping Room	Sleeping Room	Sleeping Room	Sleeping Room	Sleeping Room	Sleeping Room	Commons (400 m <sup>2</sup> )
						Clubhouse (1500 m <sup>2</sup> )
						Commons (400 m <sup>2</sup> )
						Clubhouse (1500 m <sup>2</sup> )
						Commons (400 m <sup>2</sup> )
						Clubhouse (1500 m <sup>2</sup> )
						Commons (400 m <sup>2</sup> )
						Clubhouse (1500 m <sup>2</sup> )
						Commons (400 m <sup>2</sup> )
						Clubhouse (1500 m <sup>2</sup> )
						Commons (400 m <sup>2</sup> )
						Clubhouse (1500 m <sup>2</sup> )
						Commons (400 m <sup>2</sup> )
						Clubhouse (1500 m <sup>2</sup> )
						Commons (400 m <sup>2</sup> )
						Clubhouse (1500 m <sup>2</sup> )
						Commons (400 m <sup>2</sup> )
						Clubhouse (1500 m <sup>2</sup> )
						Commons (400 m <sup>2</sup> )
						Clubhouse (1500 m <sup>2</sup> )
						Commons (400 m <sup>2</sup> )

**FREE SERVICES**

Basic First Aid training equipment	Medical Kit
Basic Training - 1st Aid - 2nd Aid	0-2 Age Baby Package (1 - 200)
Basic Chair	Table Football, Billiards, Table Tennis
Basic Bed for 10 beds	Darts
Basic TV	Free 1st Aid for 1000 members
Basic Change Room	Car Wash, Free 1st Aid for 1000 members
Children's Changing	Bicycle Repair and Maintenance
Auto	Kids Car Wash (max 15 cars)

**PAID SERVICES**

Children's Nappies (Diapers) Change Machine (Free), 3 Beds, etc., Evening 17:00-19:00 Main building
Telly Station (open to all) by request and 7 Sub Phone (1500 - 1000 m <sup>2</sup> )
Special 1st Aid for 1000 members

**TOTAL AREA: 5,500 m<sup>2</sup>**

\* 1st Aid (1st Aid) - 08:30 to 19:00 (07:30 to 17:00) and 09:30 to 19:00 (08:00 to 19:00)

\* Water Slides are open for 1st Aid and Water Slides opening from 10:00 to 19:00 (09:00 to 19:00)

\* 0-2 Age Baby Package can be booked from Reception. Baby Package includes Bed, Chair, Table, Baby Diaper, Bottle, Pacifier, Baby Thermometer, Breastwarmer.

**APPROXIMATE PAID SERVICES AT DIVISION**

POOL TYPE	SWIMMING POOLS				WATER SLIDES			
	m <sup>2</sup>	DEPTH	SIDE	HEATING	LOCATION	Slides	Location	Description
Outdoor Pool	950 m <sup>2</sup>	140 cm	S	-	Water Slide	Slides	Outdoor Pool	Available for 112 guests
Zero Pool	1-5 m <sup>2</sup>	140 cm	-	-	Water Slide	Slides	Outdoor Pool	Available for 112 guests
Small Outdoor Pool	100 m <sup>2</sup>	140 cm	-	-	Water Slide	Slides	Outdoor Pool	Available for 112 guests
Special Garden Children's Pool	45 m <sup>2</sup>	45 cm	-	-	Water Slide	Slides	Outdoor Pool	Available for 49 guests
Indoor Pool	115 m <sup>2</sup>	140 cm	-	✓	Water Slide	Slides	Indoor Pool	Available for 112 guests
Indoor Children's Pool	11 m <sup>2</sup>	115 cm	-	✓	Water Slide	Slides	Indoor Pool	Available for 112 guests
Sub-Phonon Pool	20 m <sup>2</sup>	75 cm	-	-	Water Slide	Slides	Indoor Pool	Available for 112 guests
Children's Activity Pool (covered)	70 m <sup>2</sup>	50 cm	-	-	Water Slide	Slides	Indoor Pool	Available for 112 guests

\* Water Slides are free of charge.

\* Water Slides are free of charge during summer season.

Peninsula Tours

*John Smith*



**2020 SUMMER BEACH**

	FREE SERVICES	PAID SERVICES
	Complimentary Beach 425 m <sup>2</sup> daily	Pool Deck
	Beach Towels	
	Beachside Café/Bar	
	Sun Loungers (200) daily	
	<b>SERVICES AT THE BEACH</b>	
	50' x 100' Pool (with zero entrance, main pool, swim lounge) *	Kids Playground (shaded)
	Bar for Poolside and Beach (Open 24)	Beach Volley, Beach Polo Ground
	Beach Cafe Show Center	10' x 10' x 6' Pool (Swim lounge, Poolside cafe, poolside lounge, etc.)
	1,200 m <sup>2</sup> Pier with Bar and sunbathing area	
	Adult Beach (200 m <sup>2</sup> )	Swimming pool for kids and teens playground facilities
	Spa & Beach Buffet Restaurant (1000 m <sup>2</sup> )	Beverage service from 10:00 am to 1:00 am (AED 25.00)
	Water Sports	

\* Adult Beach is for 12+ Age Guests

\* Services and facilities on the beach available only to guests in rooms and between the hours 07:00-11:00

**2020 SUMMER ANIMATION SERVICES**

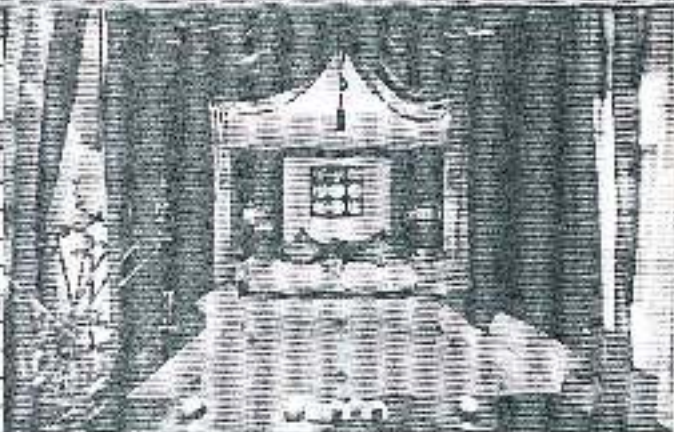
FREE ACTIVITIES	HOURS	FREE ACTIVITIES	FREE ACTIVITIES	HOURS	PAID ACTIVITIES
4 Tennis Courts (Havena 30m x 60)		Aquatic, Water, Swimming	Water Sports	08:00-12:00	Private Tennis Lesson
Beach Club (Havena 30m x 60)	08:00-20:00	Billiards, Table Tennis	Evening Shows	21:30	Water Sports
Tennis Equipment	09:00-20:00	Male's Basketball Bowling Hall	Live Music	22:30	Professional Tennis Equipment
Daily Activities	11:00-17:00	6-12 Age Aquatic (10' x 10' x 6')	Special Shows (1,200 seats)	21:30	Professional Golf equipment
Sports Activities	12:00-20:00	Equipment for fishing	Mini Golf (Beach Show Center) 1,500	23:30	Bowling (10-17 year)
Mini Golf (Beach Show Center) 1,500		Highline Games *	Beach Cafe Show Center	20:00-23:30	Air Hockey
Table Tennis, Air Hockey, Table Tennis, Backgammon		Table Tennis *	Partially covered beach		
Volleyball, Water Polo, Mini Football		Table Tennis *	Shower (140 seats)		

\* For Guests free shuttle service to Robinson and Al Yasrah

\*\* For 10-17 year olds, Dipping fees for 10-17 year olds for water - free of charge.

**2020 SUMMER SPA HIGHLIGHTS**

FREE SERVICES	
Steam Room	24 hrs. Soundproof Sauna / Hot Spring
Outdoor Massage Pool	Outdoor and Indoor Pools with Hydro-Massage Spas
Towel Service	
PAID SERVICES	
TREATMENT ROOMS (27 m <sup>2</sup> each)	
10 Massage Rooms	Rejuvenating Massage Treatments
2 Thai Massage Rooms	Facial Massage
2 Hydrotherapy Spa Rooms	Hydrotherapy Treatments
2 Jacuzzi Spa Pools	Warm Steam Inhalers, Aromatherapy Massage
BEAUTY SPA	
Facials and Body Care Units	Skin and Body Treatments
Manicure and Pedicure Room	Manicure Pedicure
Relaxation	Swimming



SPECIAL DE LUXE HAMMAM	2 DE LUXE SUITES	1 IMPERIAL SUITE
15 m <sup>2</sup> , Hammam, Sauna and Hot Tub	35 m <sup>2</sup> , Hammam, Sauna and Hot Tub	50 m <sup>2</sup> , Hammam, Sauna and Hot Tub
Includes Bath and passage for couples, 1000 sqm for 100 people	Includes: 200 sqm in Heavy Blue for Women, 100 sqm in Orange for Men, 100 sqm in Red for Romantic Couples for Couples and family use	Includes: 200 sqm in Heavy Blue for Women, 100 sqm in Orange for Men, 100 sqm in Red for Romantic Couples for Couples and family use
* Allowed for 16+ over 12 years old		* Allowed for 16+ over 12 years old

**11 LUXURY SPA ROOMS (FOR EXTRA CHARGE)**  
 \* The spa services (Reception, Lobby, Outdoor, Indoor, Relaxing Area and Changing Facilities for Men and Women) are included in the SPA.  
 \* Steam Room opening time (09:00-20:00) \* Steam Room opening time (17:00-23:00) \* 12+ years old

**TOTAL AREA 3,500 m<sup>2</sup>**





### 2020 SUMMER MEETING HALLS (SALE BASIS ONLY)

HALL	DAY LIGHT	AREA	LENGTH	WIDTH	HEIGHT	THEATRE STYLE	CLASSROOM STYLE	GALA STYLE	U STYLE	COCKTAIL STYLE
DUNDEE HALL	-	1112 m <sup>2</sup>	21.50 m	41.50 m	6.20 m	920 pax	604 pax	280 pax	270 pax	1900 m <sup>2</sup>
KULAYHAK 1	-	370 m <sup>2</sup>	14.25 m	24.50 m	6.30 m	370 pax	277 pax	270 pax	120 pax	320 pax
KULAYHAK 2	-	370 m <sup>2</sup>	14.55 m	27.50 m	6.20 m	420 pax	412 pax	240 pax	170 pax	370 pax
KULAYHAK 3	-	370 m <sup>2</sup>	14.25 m	24.50 m	6.30 m	370 pax	277 pax	270 pax	120 pax	320 pax
COVER 1	✓	205 m <sup>2</sup>	32.70 m	6.27 m	2.50 m	-	-	-	-	-
COVER 2	✓	225 m <sup>2</sup>	41.20 m	7.40 m	2.50 m	-	-	-	-	-
HALL 1	-	77 m <sup>2</sup>	5.40 m	5.97 m	2.75 m	54 pax	71 pax	24 pax	18 pax	53 pax
HALL 2	-	20 m <sup>2</sup>	5.70 m	3.60 m	2.75 m	24 pax	23 pax	24 pax	10 pax	25 pax
HALL 3	-	79 m <sup>2</sup>	5.40 m	7.15 m	2.75 m	77 pax	74 pax	28 pax	21 pax	60 pax
HALL 4	-	46 m <sup>2</sup>	6.80 m	6.80 m	2.75 m	48 pax	36 pax	24 pax	21 pax	64 pax
HALL 5	-	76 m <sup>2</sup>	6.40 m	11.20 m	2.75 m	60 pax	48 pax	24 pax	20 pax	60 pax
HALL 6	✓	48 m <sup>2</sup>	7.00 m	7.00 m	2.75 m	48 pax	37 pax	24 pax	21 pax	60 pax
HALL 7	✓	117 m <sup>2</sup>	12.90 m	7.10 m	2.75 m	170 pax	77 pax	100 pax	44 pax	120 pax
HALL 8	-	54 m <sup>2</sup>	7.75 m	7.25 m	2.75 m	80 pax	30 pax	27 pax	20 pax	65 pax
HALL 9	-	42 m <sup>2</sup>	7.15 m	5.60 m	2.75 m	62 pax	28 pax	26 pax	21 pax	73 pax
CINEMA HALL	-	25 m <sup>2</sup>	6.50 m	3.70 m	2.75 m	60 pax	-	-	-	-
PERFORMANCE HALL	-	29 m <sup>2</sup>	5.50 m	5.00 m	2.50 m	-	-	-	-	-
PERFORMANCE HALL	✓	25 m <sup>2</sup>	5.00 m	5.00 m	2.50 m	-	-	-	-	-

**Technical Equipments**

Video Screen, MC, Hi-Fi, Sound System, Street Microphone, Table Microphone, Tablets, UHF, H-Phone, JAB / CO-Phone, KO Phone, TV, Projector, Stadium

Conference table can be divided into equal meeting Halls (40, 60, 80, 100, 120)

1 km. between Terminal and Local Road for access of road up to 10.

### IMPORTANT INFORMATION

Free animal access is available at Gardens, Areas, Beach and Courts, Sea and deep sea.

Subs are not allowed to the hotel.

Guests are not allowed to be served alcohol in lounge.

All outdoor activities are suitable for our guests depending on weather conditions.

Guests are not allowed to enter the water area wearing shoes and beach wear.

Smoking is prohibited in our area, i.e. the area of the Turkish Republic.

The responsibility may be accepted by the hotel management due to several demands.

Sando Beach Hotel reserves the right to make changes without notice at any time. It is not liable for accident.

SANDO BEACH HOTEL  
 Tel: 0210-210-1111  
 Fax: 0210-210-1111  
 E-mail: [sando@peninsula.com](mailto:sando@peninsula.com)

PENINSULA TOURS  
 Turck, Boy-City, Tieve San, St. Sil.  
 Tel: 0210-210-1111  
 Fax: 0210-210-1111  
 E-mail: [peninsula@peninsula.com](mailto:peninsula@peninsula.com)